

Asanti is a colocation data centre provider, created by a team with a proven track record of experience designing, deploying and managing data centres.

We currently operate 6 UK data centres, the locations of which have been strategically chosen based on excellent network coverage and power availability. Their paired locations also make them excellent business-live and disaster recovery options for critical IT infrastructure. Each location is backed by an uptime SLA, and powered by 100% certified green energy.


Our commitment to innovation means that our secure data centres are optimised for performance, making them ready to host solutions for a range of sectors. Whether those business needs are for traditional IT infrastructure or hybrid cloud solutions.

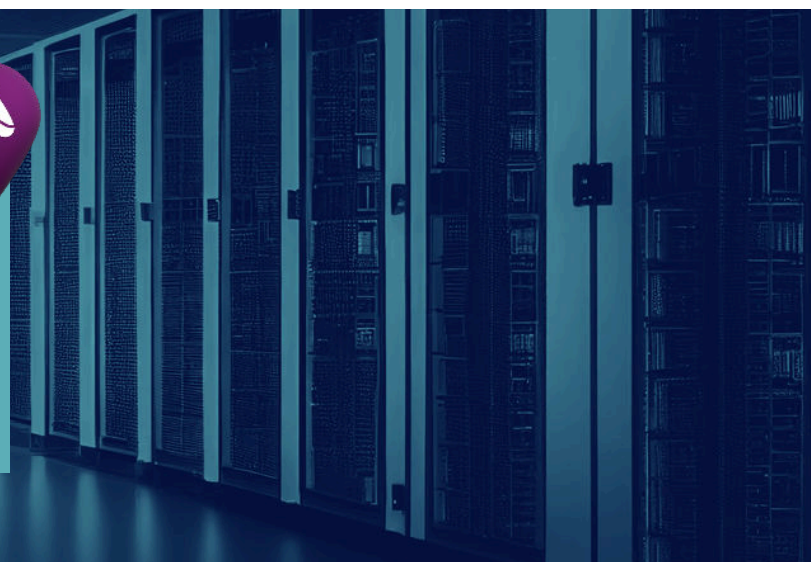
Flexibility is a key part of what we do, that's why we offer fixed fee as well as PAYG commercial models for power, enabling businesses to explore opportunities to reduce OPEX and deliver more predictable costs.

We are Asanti, and we are purpose built to deliver leading edge data centre solutions to the businesses of today, and tomorrow.



**Asanti
Farnborough
Data Centre**

- 
- B15 & B17, Armstrong Mall, Farnborough, GU14 0NR
 - 1 mile from M3 and within the data centre south east London corridor – ideally located for the south east technology market
 - 12,000 sq. ft IT white space across 4 data halls



Asanti Farnborough Data Centre Specifications



Core Services

- Colocation
- Power (fixed or metered as used)
- Network services
- Internet
- Cloud Connect services
- Power to rack monitoring is standard
- Smart Hands

Networks

- Resilient, high-capacity, low-latency connectivity
- Network security
- Carrier neutral
- Well connected to major internet hubs in the UK
- Access to multiple tier 1 network providers

Specification

- Fully controlled environment with 99.99% SLA
- N+1 cooling
- Each rack designed with A & B power feeds (higher capacity available on request)
- 100% renewable power
- Highly available electrical infrastructure
- Build room and storage work areas included
- 24/7/365 staff onsite
- Full coverage CCTV and door access controls
- ISO9001 & ISO27001 accredited